

THE 30 C^s OF THE CRAFT

A young director's glossary



CURATE

Directing means designing experiences: for your team and for your audience. I like to see myself as a museum curator : carrefully selecting a theme for my exhibit, sorting materials and arranging colors on stage.

CREATE

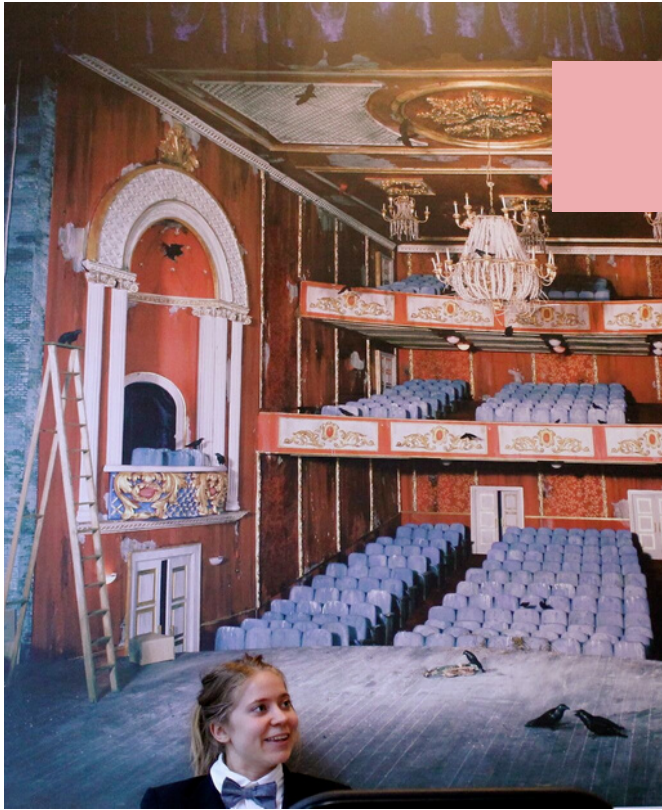
*An obvious one. Directing means :
creating a team
creating empathy
creating a vision,
creating a mood
creating a world.*



CAPTURE

Directing means capturing the moment, grasping at the beautiful images you witness and conveying them to your audience. Directing means capturing the right palette, the right mood for the performance





CONVERT

Directing means:

-converting words on a page into movement in space.

-converting your personal experience into something others can share

-converting symbols into actions and characters

CARE

Directing means :

-bringing tea and snacks

-caring for your project and the community you are working with

-caring for your audience (in some cases, caring means making them uncomfortable)

-caring about humans generally



COLLECT

Directing means keeping ideas and images nicely stored in your memory for future use. Record your thoughts, your dreams, your memories. Record sounds on the street or people's conversations. Collect funky trinkets too, you never know how they might inspire you !



CONTEMPLATE



Directing means going for a long walk in the forest. Looking out the window on the bus. Listening to the crunch of snow under your feet. Smelling the fresh bread at the bakery. Taking a bubble bath. Go through the world with your senses always activated and your imagination running free. Be alert, be open. Soak the sun in. Let yourself be inspired.

CITE

Directing means layering a whole bunch of references, texts and images. Take all those quotes, and little scraps of ideas you've collected and enjoy citing them through your work.



COLLABORATE

Directing means working with at least one another person. Often, you can even collaborate with more than twenty people. That is the amazing beauty of theatre so make it count and let others artistically contaminate your work with their great ideas.





COMPOSE

Directing means composing your sound design like a symphony or composing your stage pictures like a harmonious painting. Think of how the stage elements themselves can become characters in what you are trying to represent.

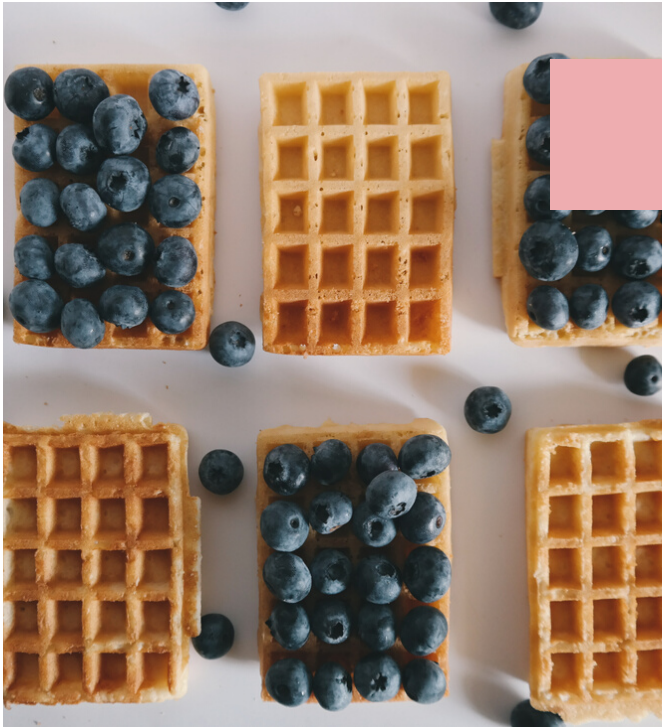
COMMUNICATE

Directing means knowing what you are trying to say and knowing who you are talking to. Clarify your intentions and communicate it clearly to your team. Clarify the message of your work for yourself and determine the ways in which you will either convey it or conceal it.



CAST

Directing means "casting" a wide net when you consider who you might cast in your play. Challenge your biases and push yourself to include new collaborators. Your work will grow from it.



CALIBRATE

Directing means :

- gaging what you'll need and how you'll accomplish it*
- carefully assessing what is the priority in any given moment*
- When absolutely necessary, adjusting your vision based on the realities of time and money*
- measuring your success!*

CAMOUFLAGE

Directing means clearly defining what it is you want to say and hiding under layers of symbols and text. Don't shove your message down their throats : let the audience uncover it for themselves



CUT

Directing means :

- cutting the superfluous*
- cutting the useless*
- cutting the too-familiar*
- cutting the toxic*
- cutting on sleep during tech week*



CELEBRATE

Directing is all about :

- celebrating the power of the universe through your art (both on the micro and macro scale)*
- celebrating the beauty of humanity*
- celebrating with your audience ! I like to think of my productions as a thematic party I'm hosting.*
- whenever possible, it's also about celebrating your failures because those are a part of your learning process*

CHALLENGE

Don't be afraid to:

- challenge your beliefs and biases*
- challenge your team when the work is not quite what you hoped for*
- challenge your audience to think outside the box and beyond the 4th wall*



CHISEL

Think of your initial idea a block of marble you have to chisel and refine. The big block can seem intimidating and imposing, but little by little you can sculpt your way to something valuable. And remember: at times you can rudely cut off whole pieces of rock and at other you will need to be extremely precise.



COMBAT

This is 100% a message for myself. Combat, but don't compete. Combat what fuels your anger. Dismantle, deconstruct. Use your authority as a director to be fair and inclusive, use your voice to speak out, use your stage to shine a light on important issues. And while you're at it, try to celebrate the success of others.

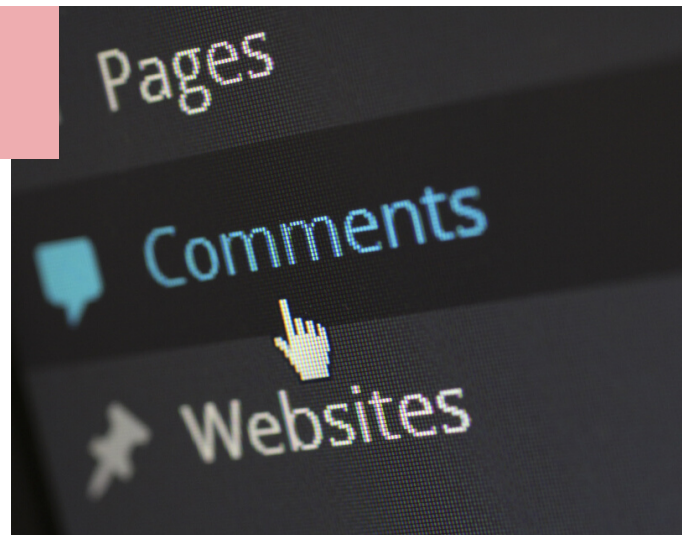
COMMENT

Directing means :

-commenting on the times we live in, as well as commenting on our collective past and future

-commenting on what we observe

No matter what we choose to say through our comments, we must take position.



COMMIT

You won't survive in this difficult and competitive industry if you don't commit yourself fully to this wonderful craft and the art of trying your best. Also, when you agree to a project, commit with your whole heart.



COMPEL

An obvious one again. Compel your audience, enchant them, intrigue them, provoke their reflections. Compel your team, drive them towards the importance of the project. Make the experience of working with you delightful, meaningful irresistible...

CONSOLIDATE

You are the architect and designer. It's your job to bring everybody together, to merge all the great ideas, to glue the miscellaneous parts into a cohesive whole, to build your hopes and dreams into artistic skyscrapers. Before anything else, make sure your structures are safe and solid. And try not to burn your bridges (you never know)



CONNECT

Similar to above. Your role is to connect all the moving pieces. Bring people into contact and transform your rehearsal into opportunities for people to encounter others. Insure you connect personally or intellectually to the material before signing onto a project.



CONTRAST

This is where I want to contradict all my previous points about harmonizing all your stage elements into a cohesive whole. I think the power of good directing is also the ability to contrast and juxtapose. Jar your audience. Shake our shoulders and open our eyes. Embrace the paradoxes of life.

CRYSTALLISE

Directing means allowing your patterns to emerge, your ideas to solidify and your intentions to take shape. Like a crystal, let your work shine. Let it be both beautiful and hard-edged. Most of all, let it be multi-faceted and complex.



CULTIVATE

Directing means :

- cultivating partnerships and meaningful collaborations*
- cultivating a positive rehearsal space where your team can grow and learn*
- cultivating your own specific universe of images and references*

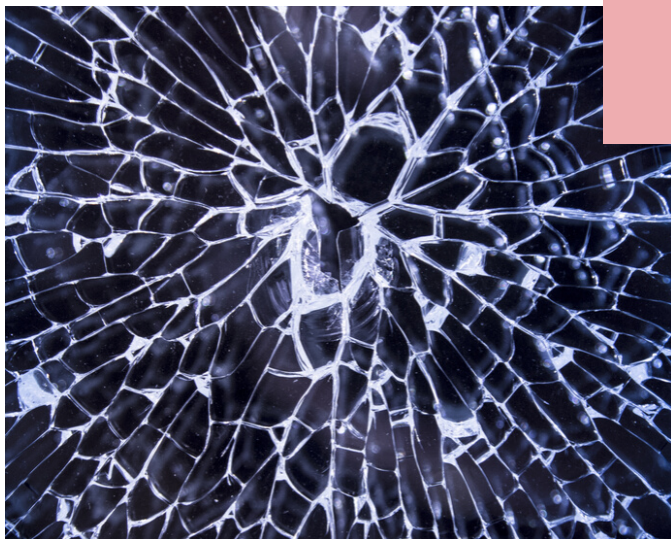


CRAVE

You've got to crave it! Be hungry! Be inspired and inspiring to others. Crave this life style, crave the experiences you'll have, the discoveries you'll make, the friends you'll meet, the discussions you'll spark. Crave it, and savor it.

CAFFENATE

Take a deep breath... and drink lots and lots of coffee ! Kidding. Do whatever it takes to jolt your system. Give yourself a burst of inspiration in those difficult moments. Splash cold water on your face. Do 10 jumping jacks. Go dance to Beyoncé.



CLASH

I would like to think that my productions don't leave my audiences indifferent. That they have an impact, that the words they heard still ring in their ears. A loud, powerful message. A clang. Like two symbols crashing together at the end of a symphony. Also, don't be afraid to have two stage pictures collide : it can be fun. As for your interactions with your team, try to avoid a clash. Opt for active listening and gentle prodding instead.